



SIRI S.r.l.
Viale delle Nazioni 77
41100 Modena - ITALIA
tel. 059. 313191
fax. 059. 311362
www.siri.mo.it - info@siri.mo.it



VIALE DELLE NAZIONI N° 77 (MO)
41100 MODENA

www.siri.mo.it - www.tilestools.eu



GB

V.120/60
V.230/50
V.240/50



SIRI MIX



**ELECTRICAL MIXER FOR THE BUILDING
INDUSTRY
SUPPLIED WITH 40 lt. BUCKET**

OPERATING AND MAINTENANCE MANUAL



CONTENTS

Introduction		Page 1
Chapter 1 DESCRIPTION of the MACHINE		2
1.1	Machine manufacturing and identification data	2
1.2	Intended use	3
1.3	Detailed description of the machine	4
1.3.1	Main parts of the machine	4
1.3.2	Spare parts reference drawings	5
1.3.3	List of spare parts	6
1.4	Improper use of the machine	7
1.5	Safety devices and guards	7
1.6	Machine controls	7
1.6.1	Description of controls	7
1.7	Technical data	8
1.7.1	Noise levels	8
1.7.2	Electrical system diagram	8
1.7.3	Overall dimensions	8
Chapter 2 GENERAL NOTES on SAFETY		9
2.1	General Points	9
2.2	Correct use of personal protective wear	9
2.3	Incorrect and prohibited uses of the machine	9
2.4	Information on residual risks factors	9
Chapter 3 INSTALLATION		10
3.1	Transport	10
3.2	Installation	10
3.3	Adjusting the machine	10
3.4	Operating procedures	11
Chapter 4 MAINTENANCE		12
4.1	Routine maintenance	12
4.2	Major servicing	12
4.3	Replacing the paddle	12
4.4	Cleaning the machine	13
4.5	Packing	13
Chapter 5 OPTIONAL EXTRAS		14
5.1	Bucket with wheels	14
5.2	Fixing the bucket with wheels	14
DECLARATION OF CONFORMITY		16
CONDITIONS OF WARRANTY		17

GUARANTEE CONDITIONS

S.I.R.I. S.r.l. guarantees all machine parts, and will replace any of the same which prove defective due to faults in manufacturing methods or materials, for 12 months from the date of purchase.

During said period of time, all transport costs will be at the purchaser's expense. S.I.R.I. will accept goods with pre-paid carriage only.

Services covered by the guarantee will only be possible if the machine is accompanied by the guarantee certificate, if the machine has not been tampered with, repaired by unauthorised persons or damaged due to improper use.

This guarantee does not cover parts subject to wear during routine applications.

This guarantee is valid provided that:

The purchase date is confirmed by the stamp and signature of an authorised agent.

The guarantee card has been filled in and sent within 10 days from the date of purchase (freight bill date) to "SIRI S.r.l.".

IMPROPER OR UNAUTHORISED APPLICATIONS OF THE MACHINE WILL RENDER THE PRESENT GUARANTEE NULL AND VOID

GUARANTEE

COMPLETE THE GUARANTEE IN ALL PARTS AND SEND IT WITHIN 10 DAYS OF PURCHASE TO:

S.I.R.I. S.r.l. Viale delle Nazioni 77, 41100 MODENA

COMPLETE AND SEND TO S.I.R.I. S.r.l.
CUSTOMER NAME

.....
.....

"SIRI MIX " Art. 13	Serial n°:	Date of purchase:
---------------------	------------	-------------------

Stamp and signature of dealer:



DECLARATION OF CE CONFORMITY

We **SI.RI S.r.l.**
 Viale delle Nazioni, 77
 41100 MODENA (ITALY)
 Tel. 059/313191 - Fax 059/311362
 www.siri.mo.it - info@siri.mo.it

Declare on our sole responsibility that the machine:

MAKE **SI.RI**

TYPE :Electrical mixer

MODEL SIRI MIX

SERIAL NUMBER

YEAR OF MANUFACTURE 20

complies with Directive 98/37 EEC as modified by Directives 91/368 EEC, 93/68 EEC and 93/44 EEC.

Signature and stamp

Description:

Electrical mixer equipped with 40 lt bucket, to mix adhesives, cement, paints, epoxy..

Model : "SiriMix"

Type: Art. 13.

Serial Number:

CONFORMITY DECLARATION.

We, signers of this letter, declare upon our exclusive responsibility, that this machine is in conformity with Directives 89/392/CEE, 91/368/CEE, 93/44CEE, 93/68/CEE and also with what is written in harmonized technical norms.

EN 292-1-2;

EN 60204.

Modena, li.....



Legal representative
 Franco Trevisi



Release: **1.0**



INTRODUCTION

Our compliments on your purchase of our electrical mixer "Sirimix" Art.13.

The "Sirimix" was developed to ensure that maximum reliability and functional efficiency will be delivered over time.

The present manual contains important advice as regards setting up the machine on site, as well as full information on spare parts, cleaning and maintenance.

This much said, it is essential that the installer and the user should be suitably experienced and knowledgeable in the use and workings of the machine.

It is similarly essential that the operator read carefully and adhere scrupulously to all directions given in the manual, relative both to operating procedures and to routine and major servicing activities.

Consequently, the Operation and Maintenance manual *should be thought of as part of the machine and kept handy at all times for ready reference whenever needed: indeed the manual must stay with the machine from initial purchase through to final destruction.*

In the event of the manual being lost or damaged, the operator can obtain a replacement copy from S.I.R.I.

When reading the manual special attention must be paid to any part where the following symbols appear:



WARNING

Indicates any operation or part of the equipment considered potentially hazardous in terms of jeopardizing the smooth operation or durability of the machine and its component parts



DANGER

Indicates any operation or part of equipment of the machine considered potentially hazardous in terms of operator safety.

This instruction manual describes:

TYPE OF MACHINE: **SIRI MIX**

SERIES AND TYPE:

YEAR OF MANUFACTURE: **20...**

This manual contains information concerning storage, transport, installation, use, supervision and maintenance of the machine described.

This manual is an integral part of the machine and must be kept throughout the entire service life of the same for future consultation. If your copy of the manual becomes unreadable, ask the maker for a new copy at the following address:

SIRI

Viale delle Nazioni, 77
 41100 MODENA (ITALY)
 Tel. 059/313191 - Fax 059/311362
 E-mail: info@siri.mo.it - http://www.siri.mo.it
 MEMBER OF EXPO – MODENA CONSORTIUM

specifying the machine type and the serial or order number printed on the machine's nameplate.

THE OFFICIAL LANGUAGE OF THE MAKER IS ITALIAN.

No responsibility is assumed for translations in other languages, which do not correspond to the original meaning.

This manual reflects the state-of-the-art the moment the machine was supplied and cannot be considered inadequate if there have been subsequent modifications according to further experience. **SIRI** reserves the right to update its products and manuals without being obliged to inform the users of machinery previously supplied of these modifications. The provision of information concerning updates of the machine and manual is to be considered as a form of courtesy.





1.1 MACHINE MANUFACTURING AND IDENTIFICATION DATA

Two data plates are fitted to the "SiriMix", positioned as illustrated in Fig.1.
The first plate bears the CE mark, the model and article numbers of the machine, the serial number and the year of manufacture.
The second plate carries the motor data.
No item of data on either plate must be altered in any way.



MODENA -ITALY-		SINGLE-PHASE MOTOR	
V.120/60-230/50		W. 0.37 Hp. 0.5	
A. 7	µF 16		
INSULATION CLASSE F	SERVICE S1	RpM. 1650	



Fig. 1



5.1 BUCKET WITH WHEELS

The "SiriMix" comes with a bucket to be placed onto the support table (Pos.8; Fig.3).
On request, a bucket with wheels may be supplied, enabling the user to transport the mixture without lifting the bucket.

5.2 INSTALLING THE BUCKET WITH WHEELS

To replace the bucket normally supplied with the bucket with wheels, simply unscrew the locking screws of the bucket support and place the new pail under the machine (Fig.10). Then proceed with the usual operations.



Fig. 10





4.4 CLEANING THE MACHINE

⚠ All the following operations must be carried out with the machine switched off and disconnected from power supply
To grant smooth functioning of the machine over time, keep to the following instructions when work has been completed:

- 1- Thourougly empty the bucket;
- 2 - Carefully clean the paddle and the bucket, to take away any residual matter that once dried could keep the paddle from turning, when reset into motion.

⚠ ***Do not immerse the machine into water.***

⚠ ***When washing the machine, take care the water is never jetted at directly on to the motor.***

PROLONGED IDLENESS:

Check the integrity of electrical cables;
Place the machine into the carton box.

4.5 PACKING THE MACHINE

Before packing the machine for transport, some operations must be performed:
Disconnect the machine from the power supply;
Carry out the operations described at point 4.4;
Disconnect the lever on the left side of the machine (Fig. 9) and lower the paddle until the lever gets connected in the lowest position. Make certain the pipe on the right side of the machine blocks the handle of the bucket (Fig.8);
Lift the mixer (NB. at least two people are required);
Place it into the supplied carton box.



1.2 INTENDED USE

The "SiriMix" is a universal mixer supplied with 40 lt. capacity bucket and motor with gear reducer making the paddle revolve and thus mixing tile adhesives, cement, paints and epoxies at best.

Developed to meet the tile layer's every need, the "SiriMix" comes with a bucket capable of containing a whole glue sack and with wheels allowing an easier transport during laying operations.

The machine is especially designed for the professional, though may be used also by persons with experience in the tile cutting field or in activities on the building sites.

PROTECTION DEVICES

The paddle is the single moving component of the machine and it must be set into motion only when inside the bucket, and protected from the risk of contact with any external body. No special protection device is therefore needed.

No ear protectors need not to be worn, since the noise emmission level is very low.

ELECTRICAL COMPONENTS

The "SiriMix" is endowed with a cut-out switch with a low voltage solenoid (Fig.5) so that in the event of a momentary power loss the switch will revert automatically to the "0" position. Once the power is restored, the "I" button must be pressed to set the machine into motion again.

Similarly, the switch contact will break in the event of the mixer being overloaded to the extent that the motor could overheat seriously and burn out.

The "SiriMix" is supplied with a microswitch making the motor stall when the paddle is lifted over a given level, so that the now unprotected paddle cannot catch on clothes or any other external body.





1.3 DETAILED DESCRIPTION OF THE MACHINE

The "SiriMix" is an electrical mixer especially designed to allow professional operators to mix most building materials.

The machine comprises the following main parts (Fig.2)

- 1 - Motor with gear reducer;
- 2 - Support with wheels;
- 3 - Bucket (with wheels as optional extra);
- 4 - Gear reducer support
- 5 - Switch and microswitch case
- 6 - Paddle
- 7 - Bucket cap

1.3.1 MAIN PARTS OF THE MACHINE

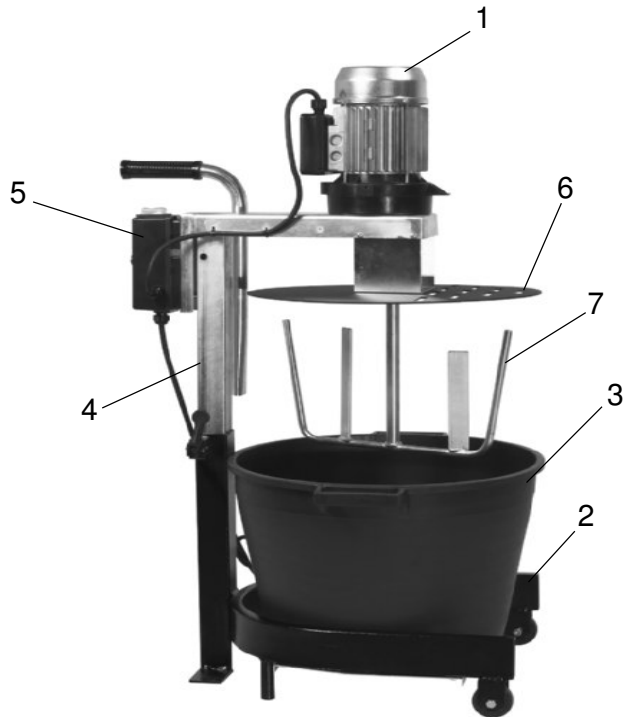


Fig.2



⚠ CAUTION: All routine and major servicing operations must be performed with the machine disconnected from the power supply.

4.1 ROUTINE MAINTENANCE

The user must carry out routine maintenance operations (cleaning and lubrication) and check the integrity of the machine's working parts at least once a week.

A limited number of operations only can be performed by the user:

Cleaning all parts of the machine, taking especially care to the cleaning of the bucket and the paddle from any glue residues or any other material which may cause scales to form;
Checking the state of all electrical cables.

⚠ CAUTION: Never start up the machine before positioning the bucket properly.

⚠ NB: Always replace damaged cables with original spare parts.

⚠ Never perform mending operations with joints or insulating tape.

All of these operations must be carried out in strict accordance with the directions on safety and procedures contained in the present manual.

No other general maintenance is required beyond the possible replacements of parts that may become damaged during normal use; this work must be entrusted only to skilled fitters approved by the S.I.R.I. company.

4.2 MAJOR SERVICING

In addition to weekly routine maintenance, the "SiriMix" will require some servicing operations, typically when working has been completed on site, and especially if the equipment is to remain idle for an extended period. Servicing involves:

- Cleaning all parts of the machine (see previous section);
- Careful lubrication of all moving parts that may have had lengthy exposure to damp and dirty conditions;
- Replacing the paddle, if damaged or worn- out;
- Packing into the carton box for transport.

4.3 REPLACING THE PADDLE

⚠ Before performing the following operations, make certain the machine has been disconnected from the power panel!

Follow the given instructions to replace a damaged or worn-out paddle:

- Lift the support for gear reducer to the second position (3.4, point 2);
- Remove the bucket;
- Lock the nut of the threaded pin protruding from the gear reducer;
- Unscrew the paddle clockwise;
- Replace with an original spare part;
- Screw the new paddle counterclockwise.





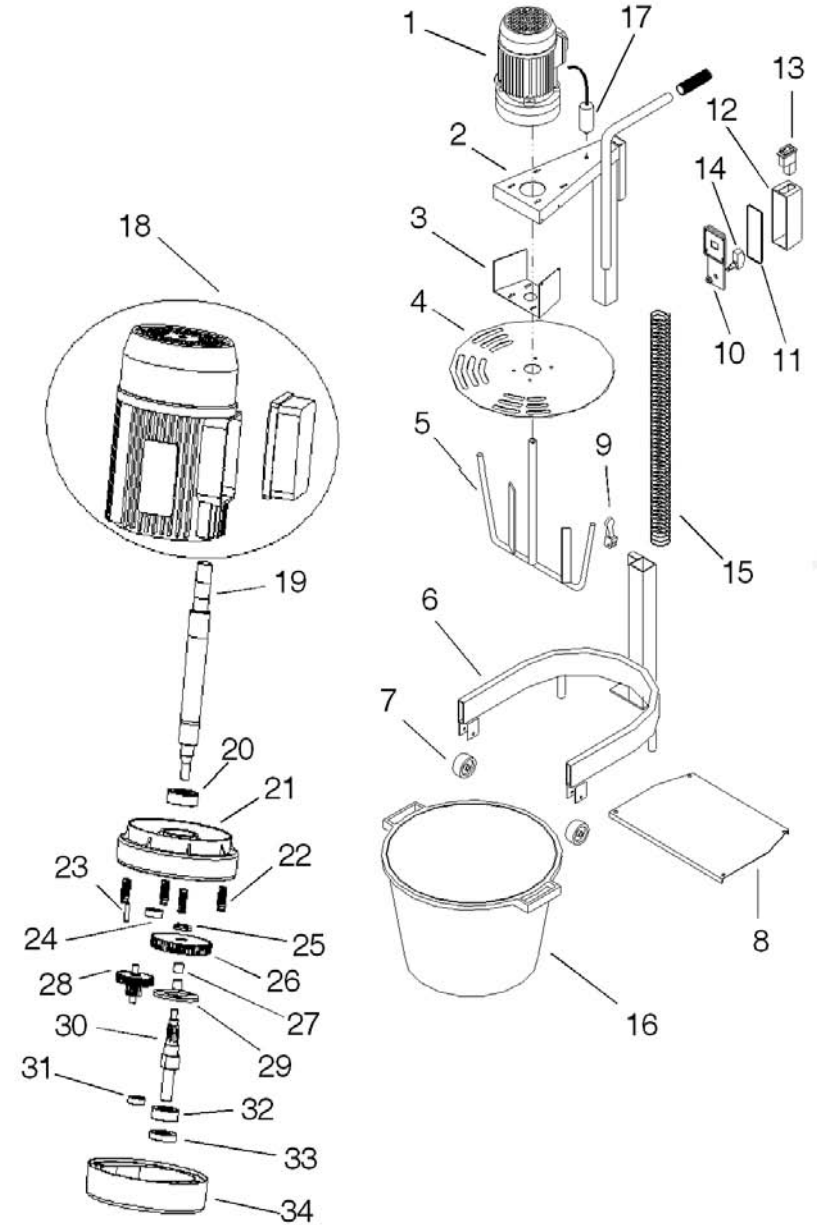
Fig. 8



Fig. 9



1.3.2 SPARE PARTS REFERENCE DRAWINGS





1.3.3. LIST OF SPARE PARTS

REF.	N°	DESCRIPTION	ART.
1	1	Motor reducer V.120/60	13-00
1	1	Motor reducer V.230/50	13-01
1	1	Motor reducer V.240/50	13-12
2	1	Support for motor reducer	13-03
3	1	Bucket cup connection	13-09
4	1	Bucket cup	13-06P
5	1	Paddle	13-05
6	1	Mixer base	13-02
7	2	Wheels	13-35
8	1	Bucket support	13-07Z
9	1	Lever	30MINI
10	1	Switch box base	471RET
11	0,4	Switch box gasket	226-01
12	1	Switch box V.120/60	471MEX
12	1	Switch box V.230/50	471MIX
12	1	Switch box V.240/50	471MAX
13	1	Switch V.120/60	505-03
13	1	Switch V.230/50	505-17
14	1	Microswitch	13-04
15	1	Spring	13-08
16	1	Bucket	18-03
17	1	Condenser	13-90
18	1	Motor V.120/60	13-23
18	1	Motor V.230/50	13-30
19	1	Shafted motor	254
20	1	Bearing	6203
21	1	Reducer base	14-21
22	1	Insert for base	-
23	1	Parallel pin	243SPI
24	1	Bearing	14-27
25	1	Metal ring for reducer	G12X1
26	1	Main gearing	253
27	2	Case roller	14-26
28	1	Secondary gearing	251
29	1	Slab for gearing	14-51
30	1	Treated pin	821
31	1	Bearing	14-27
32	1	Bearing	270
33	1	Gasket ring	14-17
34	1	Reducer cup	14-022

3.3 ADJUSTING THE MACHINE

The "SiriMix" leaves the factory fully tested; the user has not to perform any adjustments or fixing operations, except for installing the bucket with wheels (optional extra) as described in section 5.5.

3.4 OPERATING PROCEDURES

To carry out any operations with the "SiriMix", having installed it following the given instructions, the user has to proceed as follows:

- 1 - Insert the plug into the power socket;
- 2 - Lift the paddle to the second position, disconnecting the lever on the left side of the machine (Fig.9);
- 3 - Pour the amount of water as indicated on the glue sack into the bucket;
- 4 - Pour the contents of a sack of glue into the bucket;
- 5 - Disconnect the paddle as at point 2 and lower it until the lever gets connected in the lowest position. Check that the pipe on the right side of the machine blocks the handle of the bucket (Fig. 8);
- 6 - Press the button "I" of the switch to set the paddle into motion;
- 7 - Check that the mixture has reached the desired consistency (otherwise add water or glue through the slits on the bucket cap);
- 8 - Revert the switch to the "0" position, letting the paddle stop turning;
- 9 - Repeat the operation at point 2 to use the mixture;

When the mixture inside the pail is finished, repeat all operations from point 1 to perform a further working cycle.

NB: when operating:

- CAUTION: One person only must operate the machine.
- Nobody other than the user should be allowed in the space immediately surrounding the machine while working.
- CAUTION: Daily check power cables of the machines.
- Make certain the operator is always free from obstacles
- Any adjustments must be carried out with the machine switched off and disconnected from the power supply.
- Do not subject the motor to severe stresses due to excessive filling of the bucket, incorrect dilution of the glue or improper use of the machine.





3.1 TRANSPORT

To facilitate transportation the machine is packed and stored inside a strong cardboard box to protect it from possible impacts.

When repositioning on site, keep to the following instructions:

- 1 - Disconnect the machine from the power supply.
- 2 - Grip the handle on the side opposite to the operator.
- 3 - Lift the machine on the front wheels and position at will.



do not move the machine before disconnecting the power supply, pressing the "0" button of the switch and removing the plug from the panel socket.

3.2 INSTALLATION



It is the user's responsibility to ensure that installation is carried out in compliance with local regulations. The machine must be installed by a skilled person who has read carefully and understood the information given in the present manual.

All directions given concerning installation of the machine must be followed with care.

For any doubts regarding installation, contact the maker without delay.

There are certain fundamental rules to be observed when installing the machine:

Firstly two people are required to remove the machine from the carton box.

The machine must then be positioned on a flat surface, making certain that there is sufficient room on all sides both for normal freedom of movement and for mixing operations.

⚠ Always check that the line voltage at the panel is the same as the rated voltage given on the motor data plate.

⚠ Never connect the machine to a power supply that is not properly earthed. This could result in a **SEVERE AND POTENTIALLY FATAL ELECTRIC SHOCK**.

⚠ Never use the machine on any surface that is not level. Operating the mixer in such conditions can be very dangerous.



1.4 IMPROPER USE OF THE MACHINE

⚠ **CAUTION:** Any servicing operation must be carried out **with the machine either switched off or isolated from the power supply**

⚠ **CAUTION:** Set the machine into motion only after having correctly positioned the bucket. The machine must be employed only for mixing materials of the kind referred to in paragraph 1.1; any improper use may shorten the life of the machine and jeopardize its smooth functioning.

The mixer presents no other counterindications.

1.5 SAFETY DEVICES AND GUARDS

The "SiriMix" is equipped with a single safety device, the cap (Fig.3; Pos.4):once the machine is started up it covers the bucket so to avoid the risk of contact with the moving paddle.

1.6 LIST OF CONTROLS

The "SiriMix" is extremely simple as regards controls.

It comes with a self - disconnecting switch supplying power to the motor when in the position "I", thus letting the paddle revolving. The motor is stopped simply by pressing the "0" button (Fig.5).

A safety microswitch is also supplied, allowing the motor to turn only once the paddle has been completely lowered into the bucket.

It is vital that the controls are never tampered with.

⚠ **All maintenance operations must be carried out with the machine switched off or isolated from the power supply.**

Access to the operating controls must be restricted exclusively to authorised persons.

The operator must ensure that all guards and that all safety devices are in their proper place and operational.

1.6.1 DESCRIPTION OF CONTROLS

The main switch performs a dual function, protecting the operator in the event of a momentary power loss by breaking the circuit and preventing an uncontrolled restart (cut-out function), and protecting the motor from overheating and burning out when subjected to a severe overload: this means in practice that if the paddle happens to become stuck and prevent the motor from turning, the switch will open automatically.

The switch is operated as follows:

-Pressing the "I" button, power is supplied to the motor circuit (Fig.5);

-Pressing the "0" button, the motor circuit is isolated from the power supply.

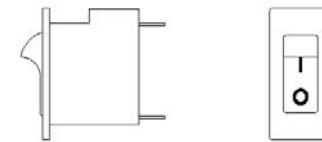


Fig. 5





1.7 TECHNICAL DATA

	ART. 13-120	ART. 13	ART. 13
Power supply	120 V - 60 Hz	230 - 50 HZ	240 - 50 HZ
Power draw	7 A	3 A	3 A
RPM	1650	1400	1400
Capacitor	16 Uf	16 Uf	16 Uf
IP protection rating	54	54	54
Insulation class	F	F	F
Bucket capacity	40 lt	40 lt	40 lt
Weight	29 kg	29 kg	29 kg
Overall dimensions	740x760x460 cm	40x760x460 cm	40x760x460 cm

1.7.1 NOISE LEVELS

Acoustic pressure at operator station is lower than 70 dBA.

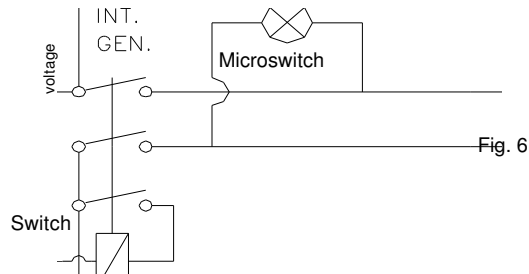


EAR PROTECTORS NEED NOT TO BE WORN WHILE OPERATING THE MIXER



1.7.2 ELECTRICAL SYSTEM DIAGRAM

The various items accompanying the machine also include the diagram of the electrical system (fig.7). Should this ever be lost or mislaid, contact S.I.R.I.



1.7.3 OVERALL DIMENSIONS

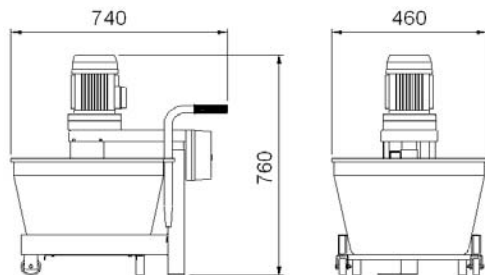


Fig. 7



2.1 GENERAL POINTS

⚠ Any repair or servicing operations must be carried out with the machine switched off and disconnected from the power supply.

⚠ Do not start up the machine before installing the bucket and lowering the motor.

⚠ Read carefully through the manual before erecting, starting and operating the machine, and before servicing or adjusting any part of the equipment.

⚠ Do not allow unauthorised persons to work on the machine.

⚠ Do not wear rings, wrist watches, jewellery, or any other clothing (baggy or loose fitting, unzipped, unbuttoned or torn) that could catch on moving parts; hair should also be gathered and tied if particularly long.

Do not occupy or encumber the operating area around the machine.

Never attempt to start the machine when affected by technical problems.

Make certain that any condition posing a possible threat to safety is eliminated before using the machine. Report any irregularities in operation to site managers or appointed supervisors.

⚠ Make certain that all guards and other protective parts are properly in place and that all safety devices are installed and operational.

Observe procedures and information given in the manual regarding maintenance and customer service.

⚠ Do not use petrol, solvents or other inflammable cleaners on the machine.

⚠ Use only proprietary solvents certified non-inflammable and non-toxic.

⚠ Do not subject the motor with gear reducer to severe stresses due to excessive filling of the bucket or to improper use.

⚠ One person only must operate the machine.

⚠ Nobody other than the operator should be allowed in the space immediately surrounding the machine when cutting.

⚠ Do not perform mending operations when the machine is working or connected to the power supply.

⚠ Check every day the status of the power cables.

⚠ Before connecting the machine to the switch panel, make certain the panel is fitted with a residual current device.

⚠ Before connecting the machine, check that the nominal power supply voltage is the same as the rated voltage of the machine.

2.2 CORRECT USE OF PERSONAL SAFETY GUARDS

No special protective devices need not to be used by the operator; indeed keeping to the regulations mentioned before is sufficient.

2.3 INCORRECT AND PROHIBITED USE OF THE MACHINE

The "SiriMix" must exclusively be employed to mix the materials as indicated in section 1.1. Using the machine improperly can place the gear reducer at risk of halting, thus causing the motor to burn.

Never make alterations to the machine or its mainparts. Alteration are permitted in the S.I.R.I. workshops only.

This rule does not apply to adjustments which prove necessary during operative life of the machine. These operations must, however, be performed by authorised persons only.

⚠ Any adjustments or operations involving the replacement of worn out mechanical parts must be carried out with the machine disconnected from the power supply.

2.4 INFORMATION ON RESIDUAL RISK FACTORS

The machine presents no residual risk factors, since, as said before, it is not dangerous.

