



SIRI S.r.l.
Viale delle Nazioni 77
41100 Modena - ITALIA
tel. 059. 313191
fax. 059. 311362
www.siri.mo.it - info@siri.mo.it



VIALE DELLE NAZIONI N° 77 (MO)
41100 MODENA

www.siri.mo.it - www.tilestools.eu



GB

V.110/50
V.120/60
V.230/50
V.240/50

FORASIRI



**TILE DRILL FOR MATERIAL DRILLING
COMPLETE OF ELECTRICAL PUMP**

OPERATING AND MAINTENANCE MANUAL



GUARANTEE CONDITIONS

CONTENTS		
Introduction		Pag. 1
1.1	Standard use	2
1.2	General notes	2
1.3	Exploded machine	3
	CONFORMITY DECLARATION	4
	GUARANTEE CONDITIONS	5

S.I.R.I. S.r.l. guarantees all machine parts, and will replace any of the same which prove defective due to faults in manufacturing methods or materials, for **12 months** from the date of purchase.

During said period of time, all transport costs will be at the purchaser's expense. S.I.R.I. will accept goods with pre-paid carriage only.

Services covered by the guarantee will only be possible if the machine is accompanied by the guarantee certificate, if the machine has not been tampered with, repaired by unauthorised persons or damaged due to improper use.

This guarantee does not cover parts subject to wear during routine applications.

This guarantee is valid provided that:

The purchase date is confirmed by the stamp and signature of an authorised agent.

The guarantee card has been filled in and sent within **10 days** from the date of purchase (freight bill date) to "SIRI S.r.l.".

IMPROPER OR UNAUTHORISED APPLICATIONS OF THE MACHINE WILL RENDER THE PRESENT GUARANTEE NULL AND VOID

GUARANTEE

COMPLETE THE GUARANTEE IN ALL PARTS AND SEND IT WITHIN 10 DAYS OF PURCHASE TO:

Ditta SIRI S.r.l. Viale Delle Nazioni,77 41100 MODENA

COMPLETE AND SEND TO S.I.R.I. S.r.l.

.....

.....

FORASIRI WITHOUT DRILL " v.110/50 <input type="checkbox"/>	FORASIRI WITH DRILL " v.110/50 <input type="checkbox"/>	Serial number:
FORASIRI WITHOUT DRILL " v.120/60 <input type="checkbox"/>	FORASIRI WITH DRILL " v.120/60 <input type="checkbox"/>	Purchase date:
FORASIRI WITHOUT DRILL " v.230/50 <input type="checkbox"/>	FORASIRI WITH DRILL " v.230/50 <input type="checkbox"/>	Stamp and signature of dealer:
FORASIRI WITHOUT DRILL " v.240/50 <input type="checkbox"/>	FORASIRI WITH DRILL " v.240/50 <input type="checkbox"/>	



DECLARATION OF CE CONFORMITY

We **SI.RI s.r.l.**
 Viale delle Nazioni, 77
 41100 MODENA (ITALY)
 Tel. 059/313191 - Fax 059/311362
 www.siri.mo.it - info@siri.mo.it

Declare on our sole responsibility that the machine:

MAKE **SI.RI**

TYPE : TYLEDRILL

MODEL FORASIRI

SERIAL NUMBER

YEAR OF MANUFACTURE 20

complies with Directive 98/37 EEC as modified by Directives 91/368 EEC, 93/68 EEC and 93/44 EEC.

Signature and stamp

Description

TILE DRILL FOR MATERIAL DRILLING COMPLETE OF ELECTRICAL PUMP

Model: "FORASIRI"

Type: Art. 5600

Serial number:

CONFORMITY DECLARATION.

We, signers of this letter, declare upon our exclusive responsibility, that this machine is in conformity with Directives 89/392/CEE, 91/368/CEE, 93/44CEE, 93/68/CEE and also with what is written in harmonized technical norms.

EN292-1-2;
 EN60204.
 Modena, li.....



Legal representative
 Franco Trevisi

Release: **1.0**



INTRODUCTION

Our compliments on your purchase of our tile drill Art.5600/5601
 The "Brushing machine" was developed to ensure that maximum reliability and functional efficiency will be delivered over time.
 The present manual contains important advice as regards setting up the machine on site, as well as full information on spare parts, cleaning and maintenance.
 This much said, it is essential that the installer and the user should be suitably experienced and knowledgeable in the use and workings of the machine.
 It is similarly essential that the operator read carefully and adhere scrupulously to all directions given in the manual, relative both to operating procedures and to routine and major servicing activities.
 Consequently, the Operation and Maintenance manual *should be thought of as part of the machine and kept handy at all times for ready reference whenever needed: indeed the manual must stay with the machine from initial purchase through to final destruction.*
 In the event of the manual being lost or damaged, the operator can obtain a replacement copy from S.I.R.I.
 When reading the manual special attention must be paid to any part where the following symbols appear:



WARNING

Indicates any operation or part of the equipment considered potentially hazardous in terms of jeopardizing the smooth operation or durability of the machine and its component parts.

DANGER

Indicates any operation or part of equipment of the machine considered potentially hazardous in terms of operator safety.

This manual contains information concerning storage, transport, installation, use, supervision and maintenance of the machine described.
 This manual is an integral part of the machine and must be kept throughout the entire service life of the same for future consultation. If your copy of the manual becomes unreadable, ask the maker for a new copy at the following address:

SIRI

Viale delle Nazioni, 77
 41100 MODENA (ITALY)
 Tel. 059/313191 - Fax 059/311362
 E-mail: info@siri.mo.it - http/www.siri.mo.it
 MEMBER OF EXPO – MODENA CONSORTIUM

specifying the machine type and the serial or order number printed on the machine's nameplate.

THE OFFICIAL LANGUAGE OF THE MAKER IS ITALIAN.

No responsibility is assumed for translations in other languages, which do not correspond to the original meaning.

This manual reflects the state-of-the-art the moment the machine was supplied and cannot be considered inadequate if there have been subsequent modifications according to further experience. **SIRI** reserves the right to update its products and manuals without being obliged to inform the users of machinery previously supplied of these modifications. The provision of information concerning updates of the machine and manual is to be considered as a form of courtesy.

Release: **1.0**





1.1 STANDARD USE

The machine comprises the following main parts:

- 1 - Drill tile loom;
- 2 - Drill support slot;
- 3 - Electrical system with cable, plug and weater pump;
- 4 - Weater basin;
- 5 - Little square;
- 6 - Weater containing and truing rings;

The "FORASIRI" is a suitable machine to pierce vitreous and ceramic materials as marble, granite, porcelain gres, klinker and brick by the bits cup used for the hole and it is complete of cool electrical pump.

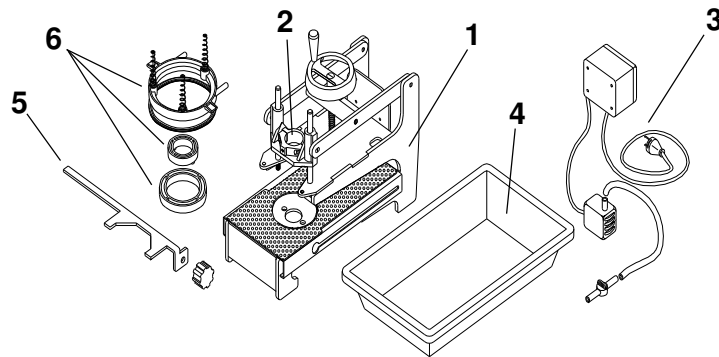
The turn on is effect by a pivoted light switch to push in "1" position.

Put the material to cut on the surface covered by anti-slide rubber.

Cut the material and slowly rotate the handwheel in an anti-clockwise position until to find tile.

For all materials described, it is necessary use bits cup or diamond bits cup.

⚠ You can not consider porcelain tiles as normal ceramic: you have to use specific bits.



1.2 GENERAL NOTES

⚠ Every repairing or maintenancing intervention, must be done when the machine is off and not connected.

⚠ Don't wear rings, watches, jewels, unlance clothes or not clinging, tear dress: convenient is to gather long hairs;

⚠ Don't use petrol, solvents or inflammable liquids to clean machine;

⚠ Use only solvents or not inflammable liquids to clean machine;

⚠ Make sure to have enough space around the operator;

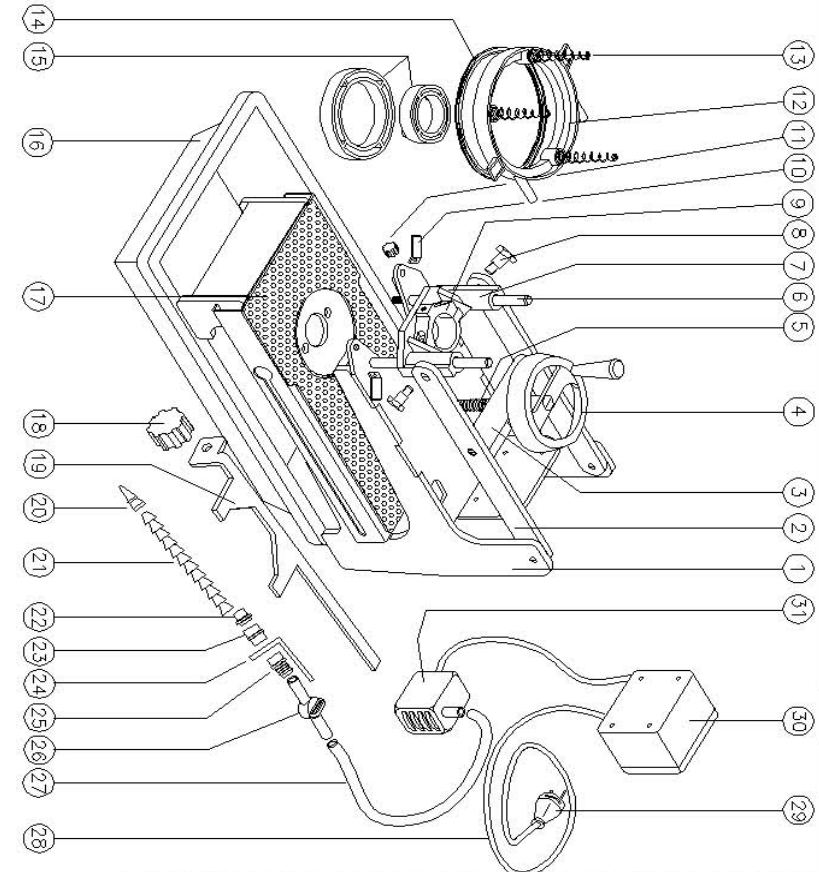
⚠ Don't repair anything when the machine is on and connected;

⚠ Check every day the feeding cable;

⚠ Before connecting the machine at switch-board, check the correct voltage.



1.3 EXPLODED MACHINE



POSIZ./Q.TY	DESCRIPTION	CODE
31	WEATER PUMP V.240/50	1056811
31	WEATER PUMP V.120/60	734SPE
30	BUTTON CASE	10568A3
29	AUSTRALIAN PLUG	953-02
29	AMERICAN PLUG	953-01
28	CABLE	534
27	ANTI-FREEZING TUBE	1043
26	TAP	28-40
25	TUBE JOINT	7014
24	DELIVERABLE BEAR SHEET	118470
23	COUPLING 1/4"	7016
22	RACCORDO INNESTO	7024
21	FLEXIBLE TUBE	7021
20	NOZZLE HOLE Ø5.4	7023
19	LITTLE SQUARE	105651
18	KNOB Ø50 M8	12-32
17	RUBBER	46-06
16	BRASIN	135
15	1+1 CENTERING RINGS KIT	1056880
14	STOP WEATER GASKET	1056-1
13	3 COMPRESSON SPRING	1056-1M
12	CONTROL RIM	105682
11	1 KNOB Ø20 M8X20	645POM
10	2 LITTLE BLOCKING PLATE	105605
9	1 SEM-COLLAR	579
8	2 HEXAGON PIVOT	595
7	1 REST DRILL	572
6	2 M8 GALVANIZED ROD	105691
5	1 TRAPEZOIDAL SCREW	105675
4	1 HANDWHEEL	8012M
3	1 HEXAGONAL CROSS	105671
2	2 BUTTONHOLE ROD	105621
1	1 LOOM	105612

